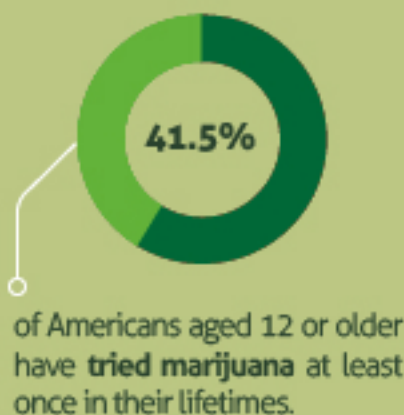


THE CAMPUS POT CONNECTION

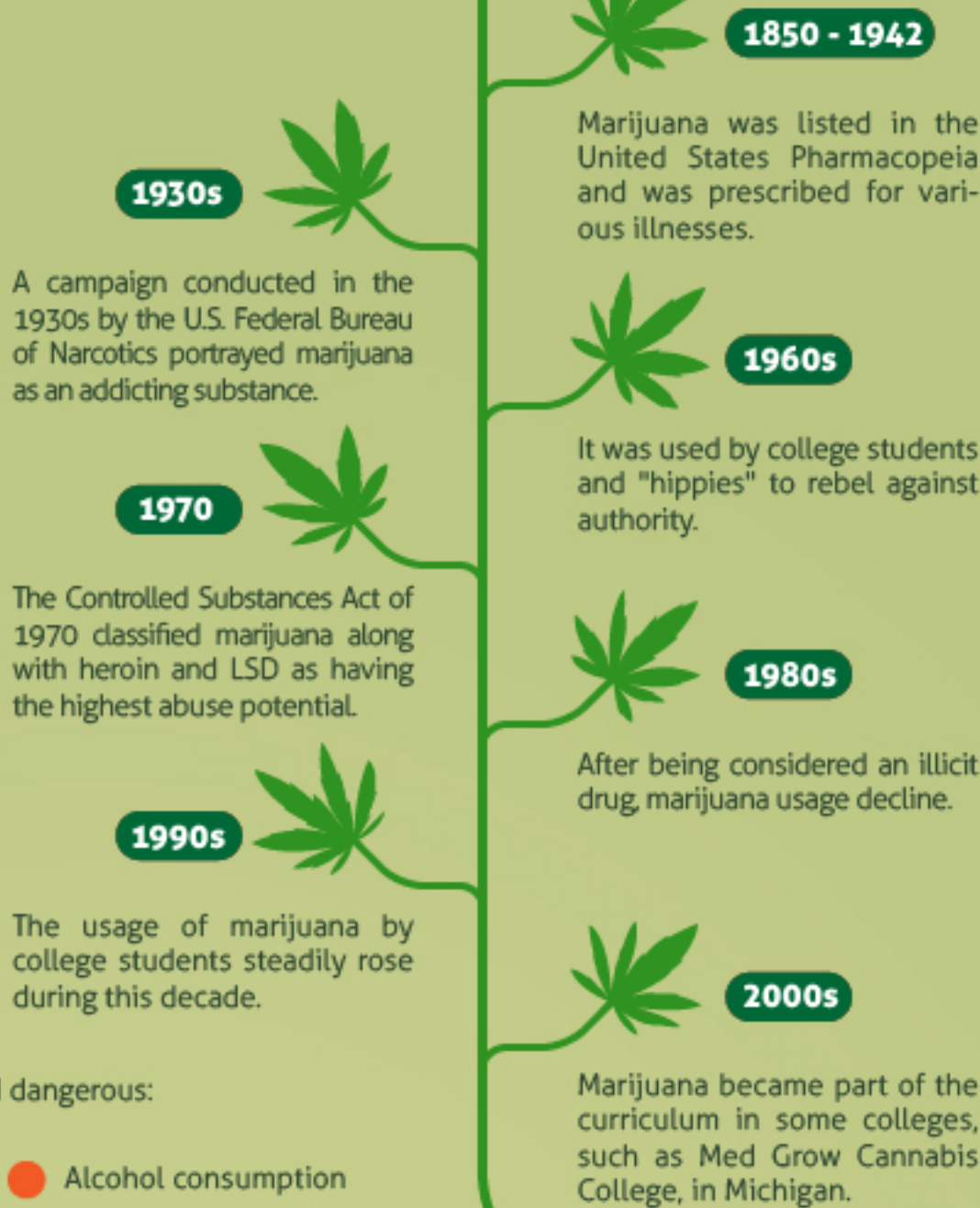
Overview



It is very harmful - especially for students - because it causes:



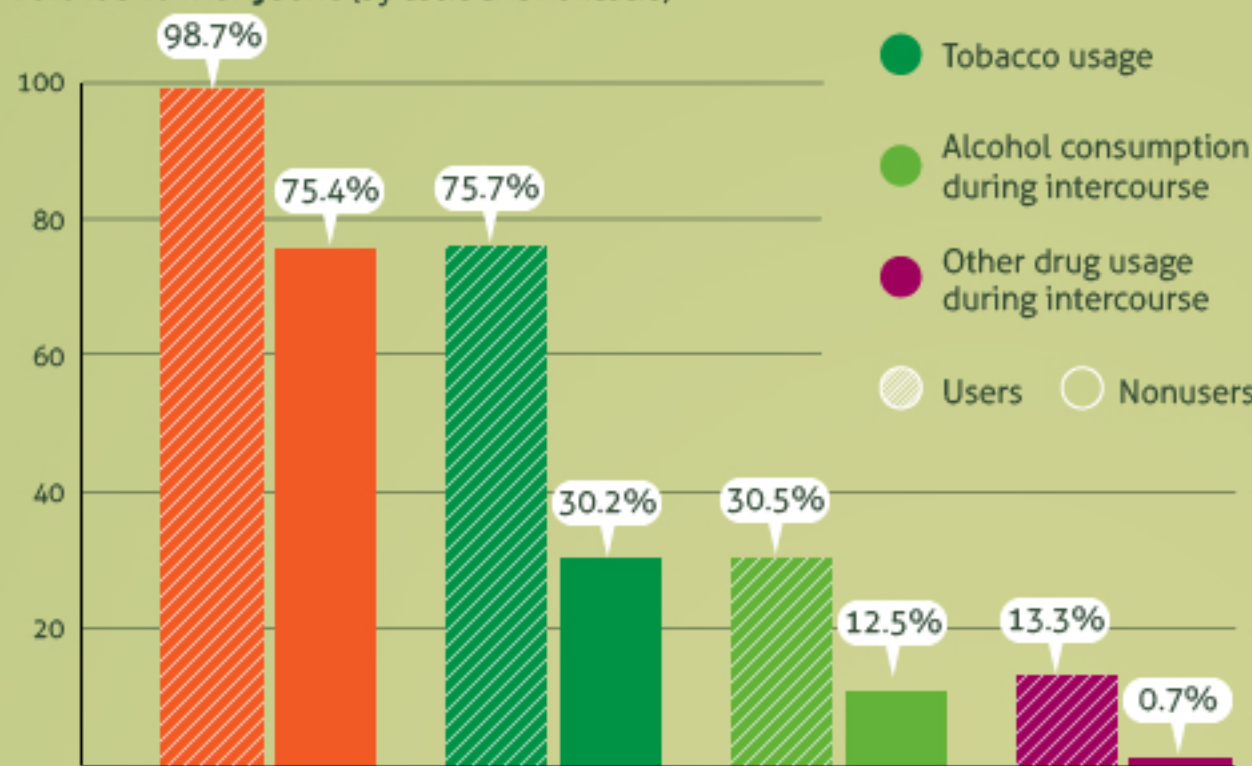
History of pot



The dangers

Find out why marijuana is considered dangerous:

College students' high-risk behaviors related to marijuana (by users and nonusers)



Pot causes dependence and health problems.

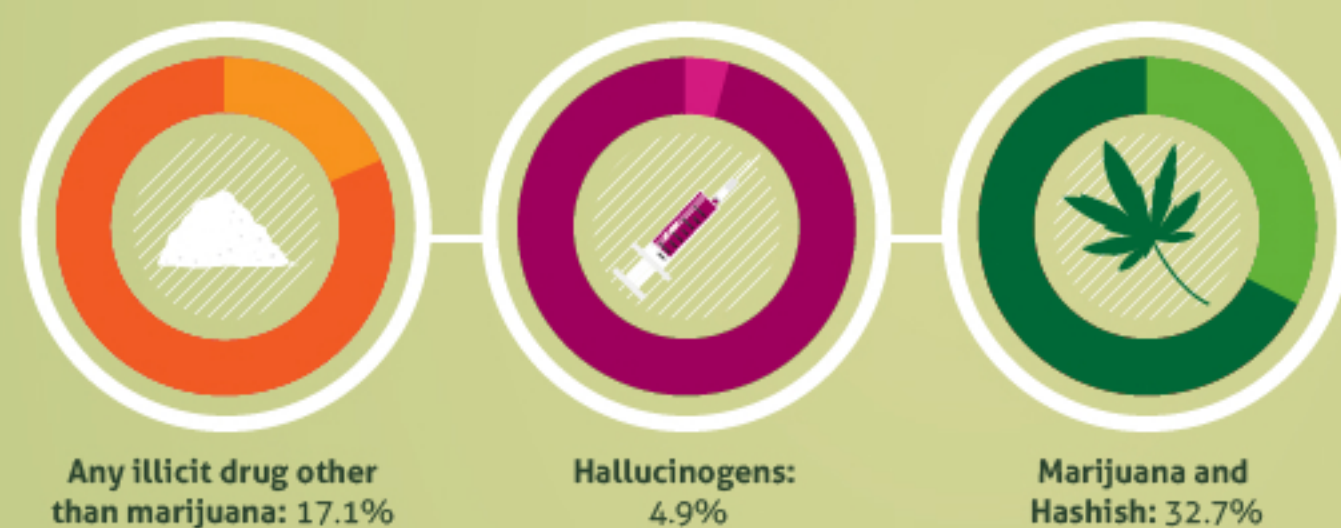
But it cannot lead to a fatal overdose.

Regardless, it's considered dangerous since it can be a gateway drug.

Comparison

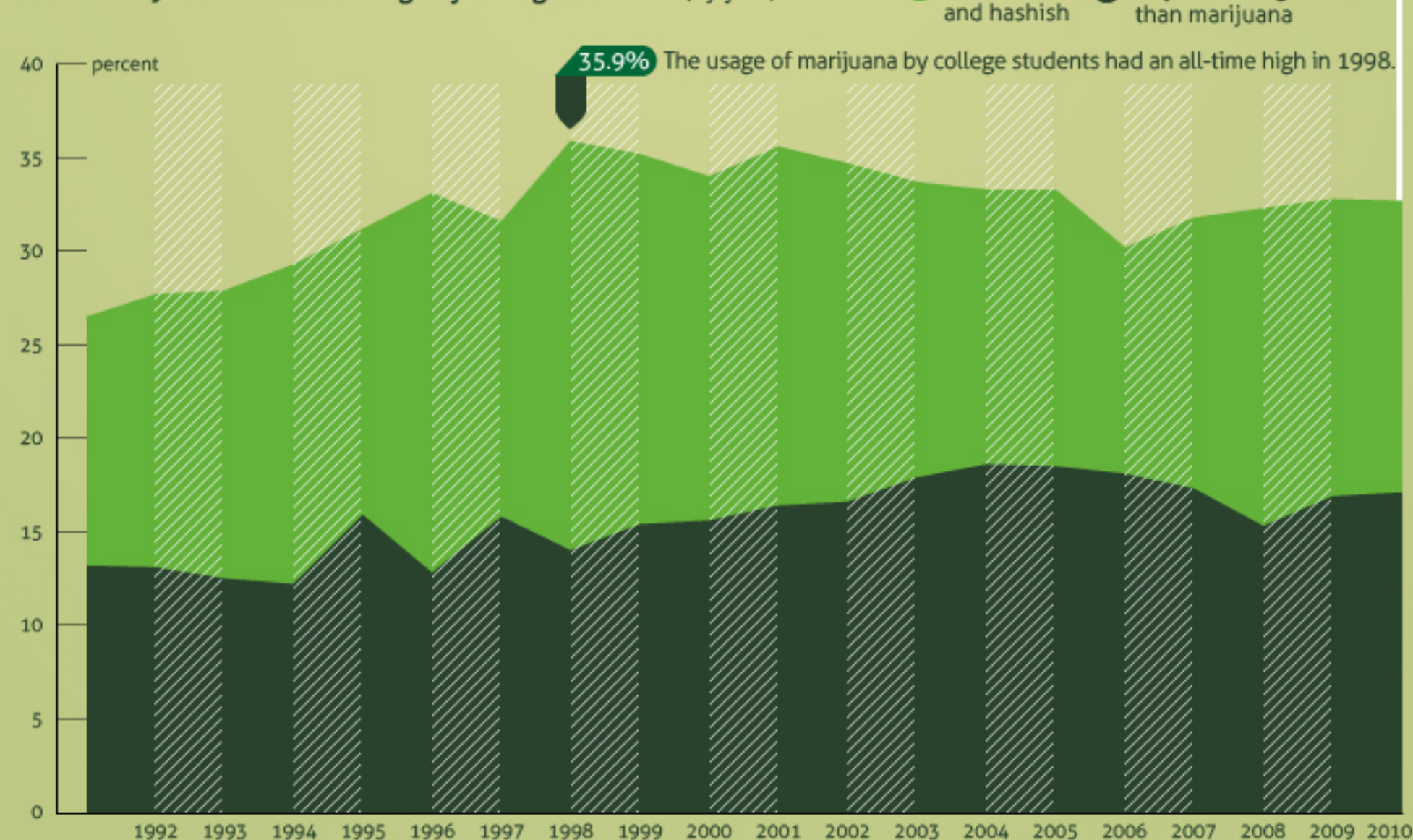
Marijuana is most popular with young adults aged 18-25, especially college students. Find out more:

Comparison between illicit drugs used by college students (2010)

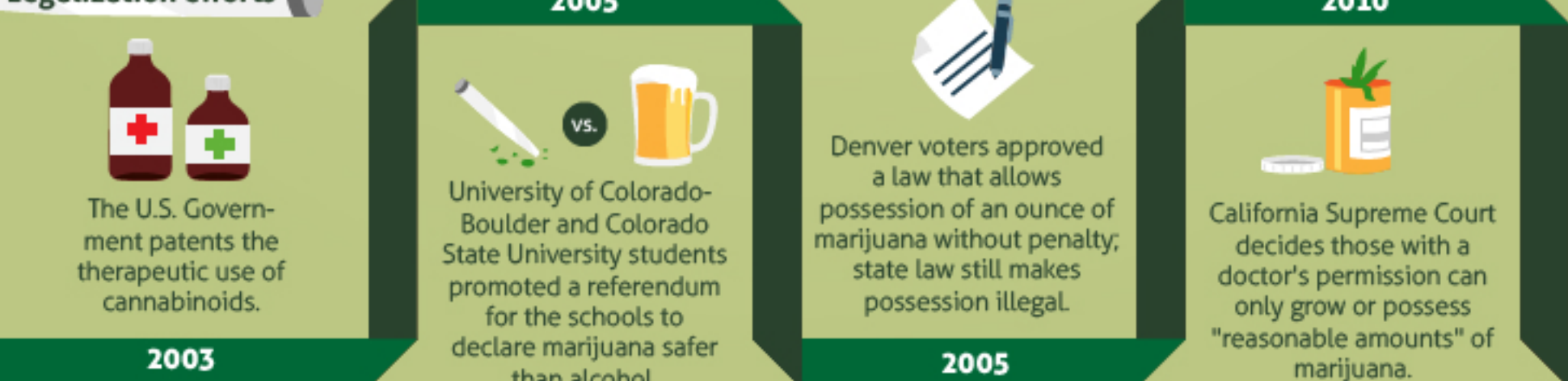


* Not even the usage rate of other illicit drugs combined outnumbers the usage rate of marijuana consumed by students.

Use of marijuana and illicit drugs by college students (by year)



Legalization efforts



Punishment in Schools

Punishment for using marijuana in college varies by institution:



There was a **386.4%** increase of on-campus marijuana arrests in 2010 at the State University of New York at Osewego.